

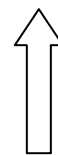
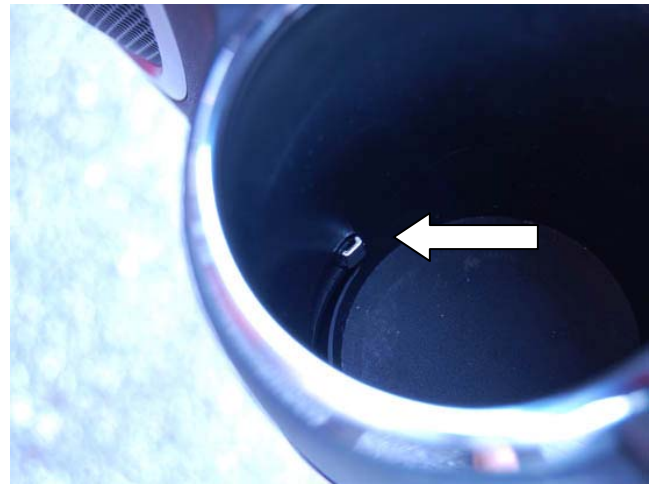
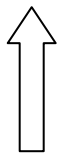
Fitting Instructions for Mk3 Door Cup Holder Chrome Strip (SI3621)

First, check the back of each trim as they are handed and marked as LH and RH accordingly. They are also marked with which is the top edge.

Push the trim in at either end with your thumbs whilst holding the inside of the cupholder. The two tabs at either end should click into place.

If they don't, using a small screw driver, flip the tab over to ensure that it clips in, and the trim will sit flush to the door panel.

Please see the photos below. If either of the tabs look like the first photo, then they are not in place properly. The second picture shows how they should fit and what you should see when you look down into the cup holder.



Notice how the gap around the edge goes when the trim is properly in place.

Scimitar International Ltd.
Unit 4, Cluster Industrial Estate
Rodney Road, Portsmouth
Hampshire, PO4 8ST
Tel: 0845 345 2384 Fax: 0845 345 2385
Website: <http://www.mx5parts.co.uk>

© Copyright 2002. Scimitar International Ltd.

These fitting instructions are supplied in good faith, and as a guide only. We accept no responsibility or liability for any damages, injury or loss caused as a result of following these instructions. Your statutory rights are not affected.